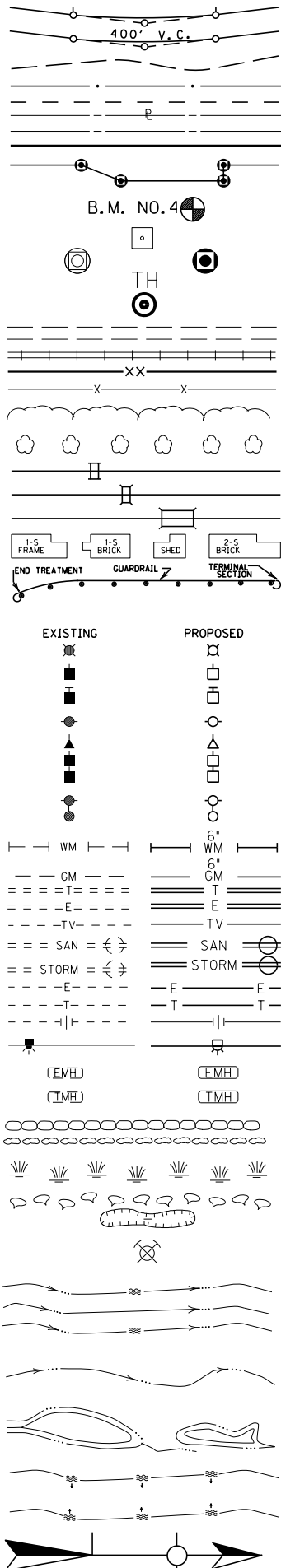


### CONVENTIONAL SIGNS

- SURVEY LINE
- GRADE LINE
- GROUND LINE
- COUNTY LINE
- CORPORATE LIMITS
- EXIST. PROPERTY LINE
- EXIST. RIGHT OF WAY & PROPERTY LINE
- PROPOSED RIGHT OF WAY
- RIGHT OF WAY MONUMENT
- BENCH MARK
- EXISTING R/W MARKER
- RIGHT OF WAY MONUMENT EXISTING/PROPOSED
- UTILITY TEST HOLE
- EXISTING ROAD
- RAILROAD
- FENCE (CONTROLLED ACCESS)
- FENCE (EXCEPT STONE AND HEDGE)
- TREE LINE
- TREES
- PIPE CULVERT
- CULVERT
- BRIDGE
- BUILDINGS
- GUARDRAIL
- LIGHTING POLE
- POWER POLE
- JOINT POWER & TELEPHONE POLE
- TELEPHONE & TELEGRAPH POLE
- ANCHOR, POWER OR TELEPHONE
- STUB POWER
- STUB TELEPHONE
- WATER MAIN
- GAS MAIN
- TELEPHONE DUCT
- ELECTRIC DUCT
- DIRECT BURIAL TV CABLE
- SANITARY SEWER (WITH MANHOLE)
- STORM SEWER (WITH MANHOLE)
- DIRECT BURIAL ELECTRIC CABLE
- DIRECT BURIAL TELEPHONE CABLE
- OVERHEAD WIRE
- TRAFFIC LIGHTS
- ELECTRIC MANHOLE
- TELEPHONE MANHOLE
- STONE FENCE
- HEDGE FENCE
- SWAMP OR MARSH
- SPRINGS
- SINKHOLE
- QUARRY SITE
- BLUE LINE STREAM
- INTERMITTENT STREAM OR DITCH
- LAKES OR PONDS
- REGULATED FLOODWAY
- NORTH POINT



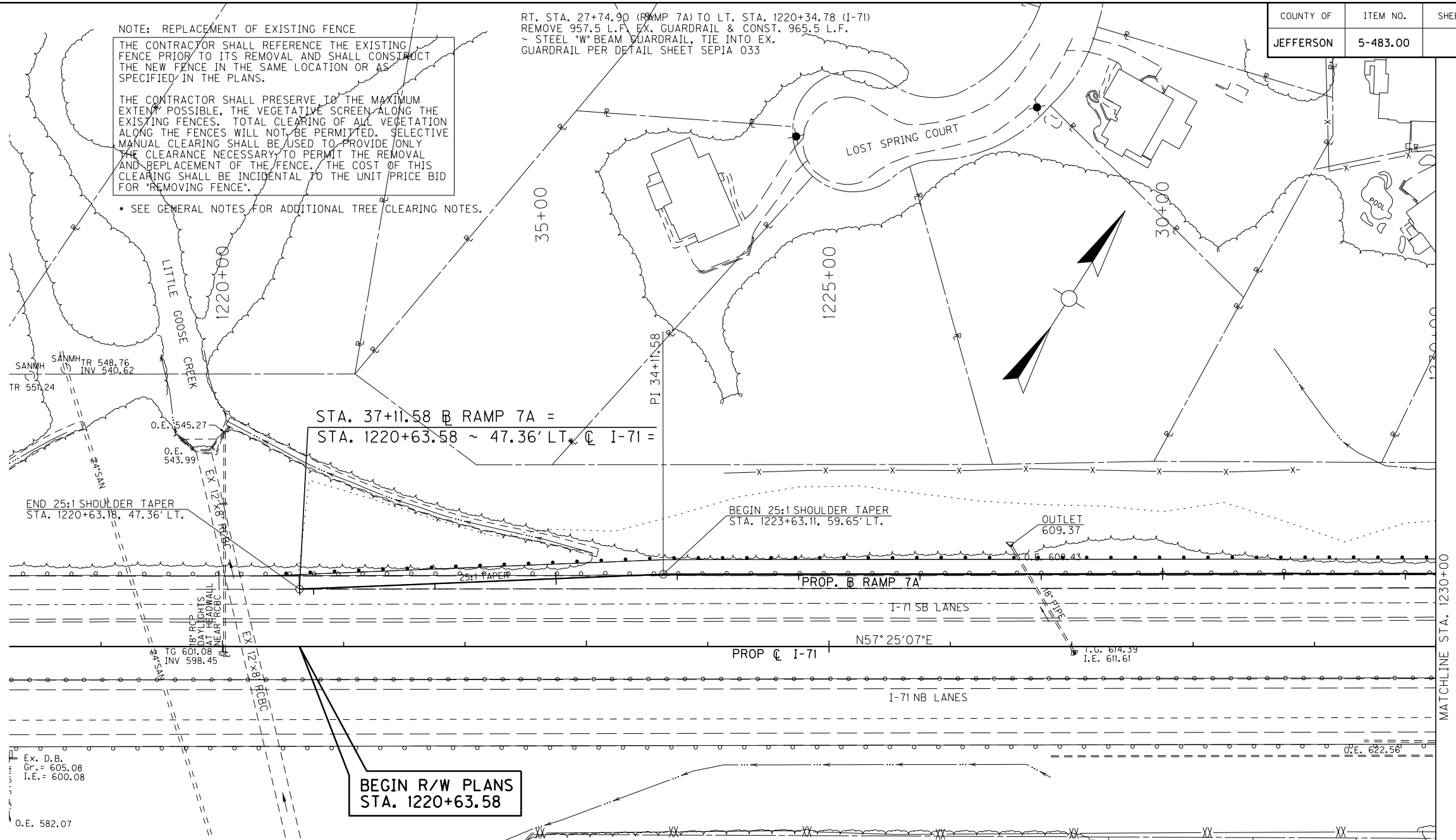
NOTE: REPLACEMENT OF EXISTING FENCE

THE CONTRACTOR SHALL REFERENCE THE EXISTING FENCE PRIOR TO ITS REMOVAL AND SHALL CONSTRUCT THE NEW FENCE IN THE SAME LOCATION OR AS SPECIFIED IN THE PLANS.

THE CONTRACTOR SHALL PRESERVE TO THE MAXIMUM EXTENT POSSIBLE, THE VEGETATIVE SCREEN ALONG THE EXISTING FENCES. TOTAL CLEARING OF ALL VEGETATION ALONG THE FENCES WILL NOT BE PERMITTED. SELECTIVE MANUAL CLEARING SHALL BE USED TO PROVIDE ONLY THE CLEARANCE NECESSARY TO PERMIT THE REMOVAL AND REPLACEMENT OF THE FENCE. THE COST OF THIS CLEARING SHALL BE INCIDENTAL TO THE UNIT PRICE BID FOR "REMOVING FENCE".

• SEE GENERAL NOTES FOR ADDITIONAL TREE CLEARING NOTES.

RT. STA. 27+74.90 (RAMP 7A) TO LT. STA. 1220+34.78 (I-71)  
 REMOVE 957.5 L.F. EX. GUARDRAIL & CONST. 965.5 L.F.  
 ~ STEEL "W" BEAM GUARDRAIL, TIE INTO EX.  
 GUARDRAIL PER DETAIL SHEET SEPJA 033



STA. 37+11.58 @ RAMP 7A =  
 STA. 1220+63.58 ~ 47.36' LT. @ I-71 =

END 25:1 SHOULDER TAPER  
 STA. 1220+63.18, 47.36' LT.

BEGIN 25:1 SHOULDER TAPER  
 STA. 1223+63.11, 59.65' LT.

BEGIN R/W PLANS  
 STA. 1220+63.58

### UTILITIES

Gas & Electric  
 LG&E KU (Electric)  
 820 West Broadway  
 Louisville, KY 40202  
 Contact Person: \_\_\_\_\_  
 Phone # \_\_\_\_\_  
 Email: \_\_\_\_\_

Telephone  
 AT&T KY  
 1340 E. John Rowan Blvd.  
 Bardstown, Ky. 40004  
 Contact Person: Scott Roche  
 (502) 348-4528 (office)  
 (502) 827-4703 (cell)  
 sr8832@att.com

Texas Gas Transmission, LLC  
 2332 Hwy 60 West  
 Hardinsburg, KY 40143  
 Contact Person: Kevin Carman  
 (270) 779-3893 (cell)  
 Kevin.Carman@bwpmlp.com  
 John Weaver  
 10327 Gaslight Way  
 Louisville, KY 40299  
 (502) 438-2407  
 John.Weaver@bwpmlp.com

Cable  
 Charter Communications  
 10168 Linn Station Road  
 Suite 120  
 Louisville, Ky. 40223  
 Contact Person: Deno Barbour  
 (502)664-7395(cell)  
 (502)357-4376(office)  
 dwight.barbour@charter.com

Indiana Gas Company Inc  
 d.b.a. Vectren Energy Delivery of Indiana, Inc  
 or  
 Ohio River Pipeline Corporation  
 2520 Lincoln Drive  
 Clarksville, Indiana 47129  
 Contact Person: Mary Barber  
 (812) 948-4952  
 MBarber@Vectren.com

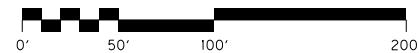
TRIMARC  
 Public Safety & Transportation Systems  
 901 West Main Street  
 Louisville, Ky. 40202  
 Contact Person: Todd Hood  
 (502)290-7201(office)  
 (502)307-7456(cell)  
 todd.hood@engc.com

Sewer  
 Metropolitan Sewer District  
 700 West Liberty Street  
 Louisville, Ky. 40203-1911  
 Contact Person: Brandon Flaherty  
 (502)540-6632(office)  
 (502)381-0804(cell)  
 Brandon.Flaherty@louisvillemtd.org

# RIGHT OF WAY PLANS

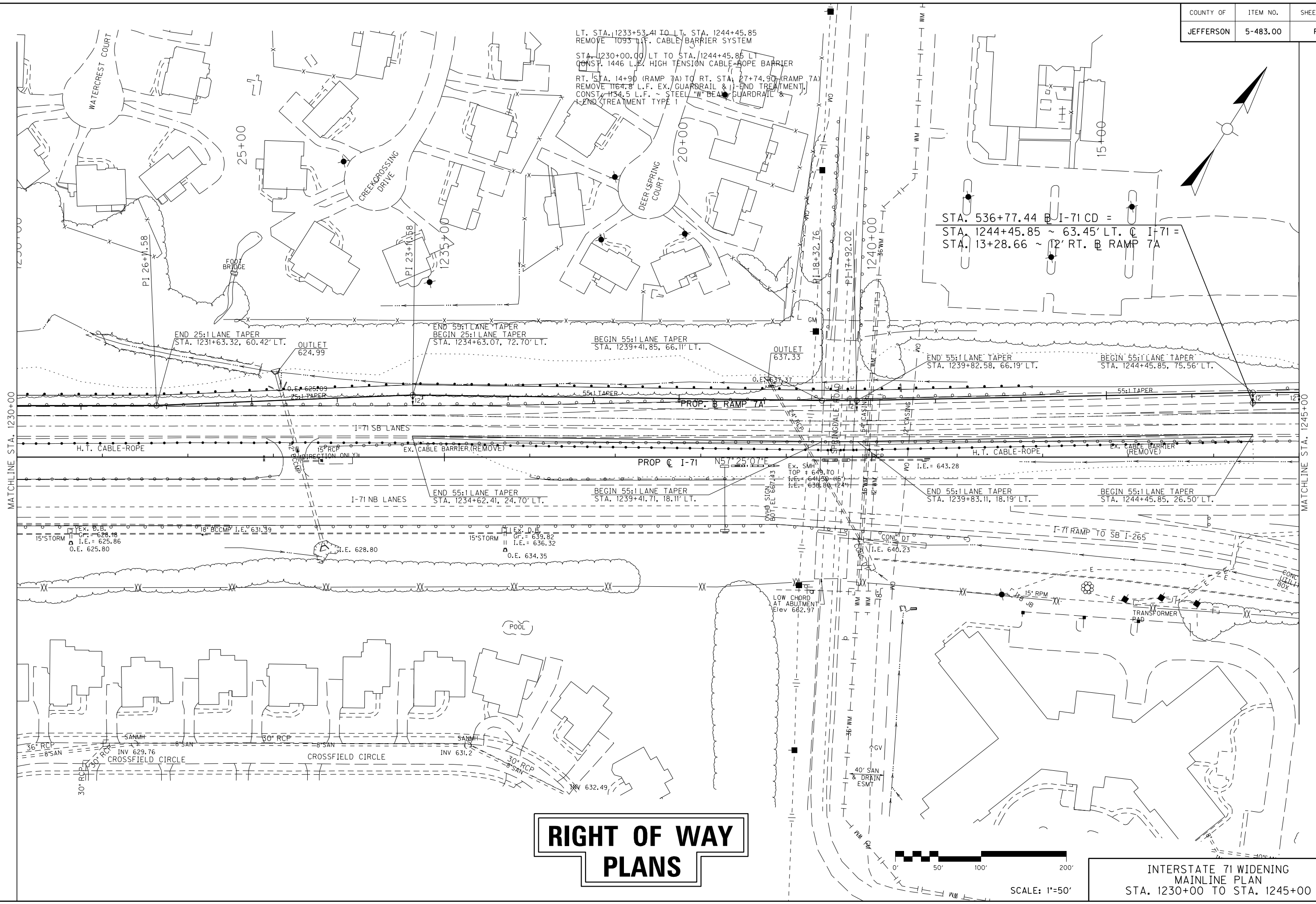
SCALE: 1"=50'

DESIGNED BY:	
DATE SUBMITTED:	
<b>Commonwealth of Kentucky</b> <b>DEPARTMENT OF HIGHWAYS</b> COUNTY OF <b>JEFFERSON / OLDHAM</b>	
PROJECT	FD 056 0071 009-011 / 093 0071 011-014
NUMBERS:	NH 0711 (1111)
I-71 WIDENING & RECONSTRUCTION MAINLINE PLAN STA. 1220+63 TO STA. 1230+00	



COUNTY OF	ITEM NO.	SHEET NO.
JEFFERSON	5-483.00	R4

FILE NAME: U:\4109 - I-71 WIDENING JEFFERSON\_OLDHAM PHASE 2\03 PLAN\1230+00\_1245+00.DGN  
 USER: giccorrell  
 DATE PLOTTED: August 29, 2018  
 E-SHEET NAME:  
 MicroStation v8.11.9.608



COUNTY OF	ITEM NO.	SHEET NO.
JEFFERSON	5-483.00	R5

RT. STA. 7+00 (RAMP 7A) TO RT. STA. 12+56 (RAMP 7A)  
 REMOVE 542 L.F. EX. GUARDRAIL & I-END TREATMENT,  
 CONST. 500 L.F. ~ STEEL "W" BEAM GUARDRAIL, I-END  
 TREATMENT TYPE 1 & I-END TREATMENT TYPE 2A

LT. STA. 7+00 (RAMP 7A) TO LT. STA. 10+04 (RAMP 7A)  
 REMOVE 375 L.F. EX. GUARDRAIL & I-END TREATMENT,  
 CONST. 312.5 L.F. ~ STEEL "W" BEAM GUARDRAIL & I-END  
 TREATMENT TYPE 2A  
 TIE INTO EX. GUARDRAIL PER DETAIL SHEET SEP1A 033

BEGIN CONST.  
 STA. 7+00.00

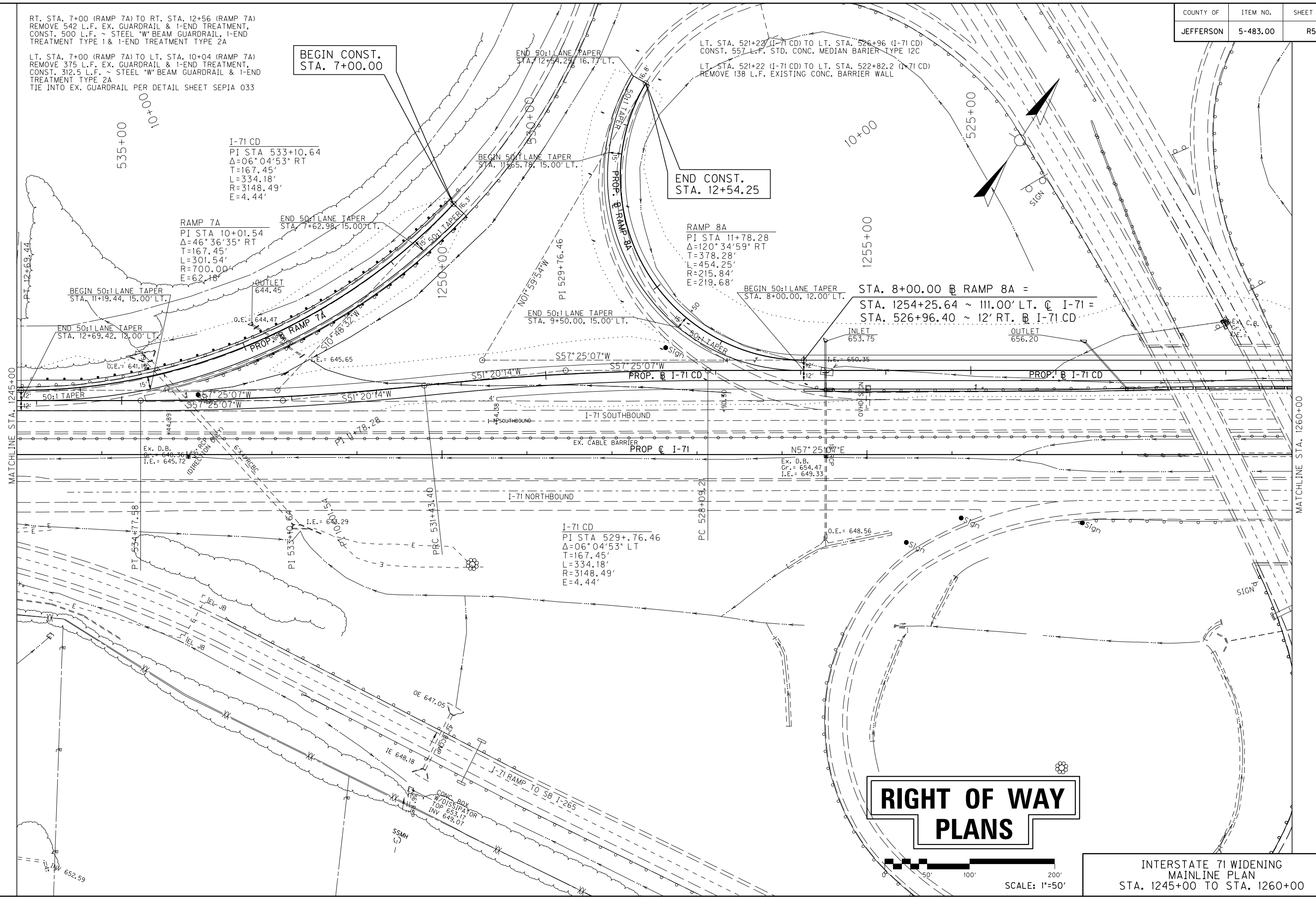
END CONST.  
 STA. 12+54.25

**RIGHT OF WAY  
 PLANS**



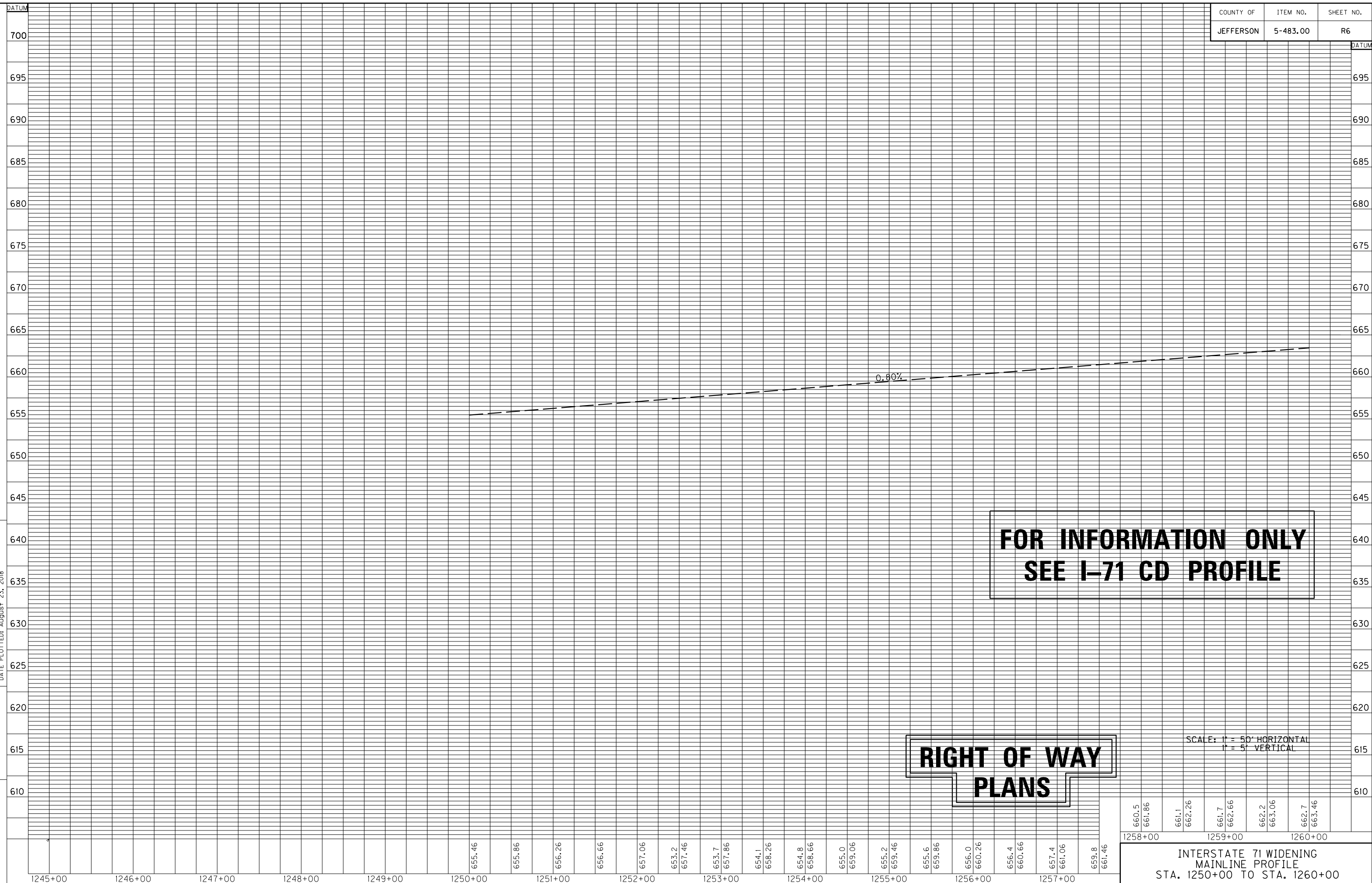
INTERSTATE 71 WIDENING  
 MAINLINE PLAN  
 STA. 1245+00 TO STA. 1260+00

FILE NAME: U:\4109 - I-71 WIDENING JEFFERSON.OLDHAM\PHASE2\03 PLAN\1245+00.1260+00.DGN  
 USER: giccorrell  
 DATE PLOTTED: August 29, 2018  
 E-SHEET NAME:  
 MicroStation v8.11.9.608



MicroStation v8.1i.9.459 E-SHEET NAME: \_\_\_\_\_ USER: Snodgrass DATE PLOTTED: August 23, 2018 FILE NAME: U:\4109 - I-71 WIDENING JEFFERSON.OLDHAM\PHASE2\04 PROFILE\250+00\_1260+00PR.DGN

COUNTY OF	ITEM NO.	SHEET NO.
JEFFERSON	5-483.00	R6



**FOR INFORMATION ONLY  
SEE I-71 CD PROFILE**

**RIGHT OF WAY  
PLANS**

SCALE: 1" = 50' HORIZONTAL  
1" = 5' VERTICAL

660.5	661.86	661.1	662.26	661.7	662.66	662.2	663.06	662.7	663.46
1258+00		1259+00						1260+00	

INTERSTATE 71 WIDENING  
MAINLINE PROFILE  
STA. 1250+00 TO STA. 1260+00

DITCH CONST. NOTES - RAMP 1 RT.

STATIONS	SIZE/SHAPE	LINING	QUANTITY	D	T	TY. I GEO. FABRIC
25+80 TO 30+00	TYPICAL DT.	E.C.B.	696.6 s.y.	1.5	--	--

I-71  
 PI STA 1274+52.44  
 $\Delta=18^{\circ}27'35''$  RT  
 $T=1241.41'$   
 $L=2461.31'$   
 $R=7639.44'$   
 $E=100.21'$   
 $e=R.C. RT$   
 Runoff= } See X-Sects & Profiles  
 Runout= }

STA. 6+79.09 @ RAMP 2A =  
 STA. 1262+48.84 ~ III.09' LT. @ I-71 =  
 STA. 518+72.70 ~ 12' RT. @ I-71 CD

BEGIN CONST.  
 STA. 2+00.00

LT. STA. 1260+66 (MEDIAN) TO STA. 1275+00 (MEDIAN)  
 REMOVE 2124 L.F. EX. CABLE BARRIER

LT. STA. 1272+89.15 TO STA. 1275+00.00  
 CONST. 623 L.F. OF 2" PVC  
 (TRIMARC SPARE CONDUIT)

LT. STA. 517+96.50 (I-71 CD)  
 CONST. CRASH CUSHION TYPE IX  
 PER DETAIL SHEET SEP1A 022

LT. STA. 520+98.6 (I-71 CD) TO  
 LT. STA. 521+22 (I-71 CD)  
 REMOVE 22 L.F. EXISTING  
 CONC. BARRIER WALL

LT. STA. 517+96.50 (I-71 CD) TO  
 LT. STA. 521+22 (I-71 CD)  
 CONST. 325.5 L.F. STD. CONC.  
 MEDIAN BARRIER TYPE 12C

LT. STA. 29+45.2 (RAMP 1) TO  
 LT. STA. 30+94.7 (RAMP 1)  
 REMOVE 100 L.F. EX. GUARDRAIL  
 & I-END TREATMENT TYPE 1,  
 CONST. I-END TREATMENT  
 TYPE 1, T.I.E. INTO EX. GUARDRAIL

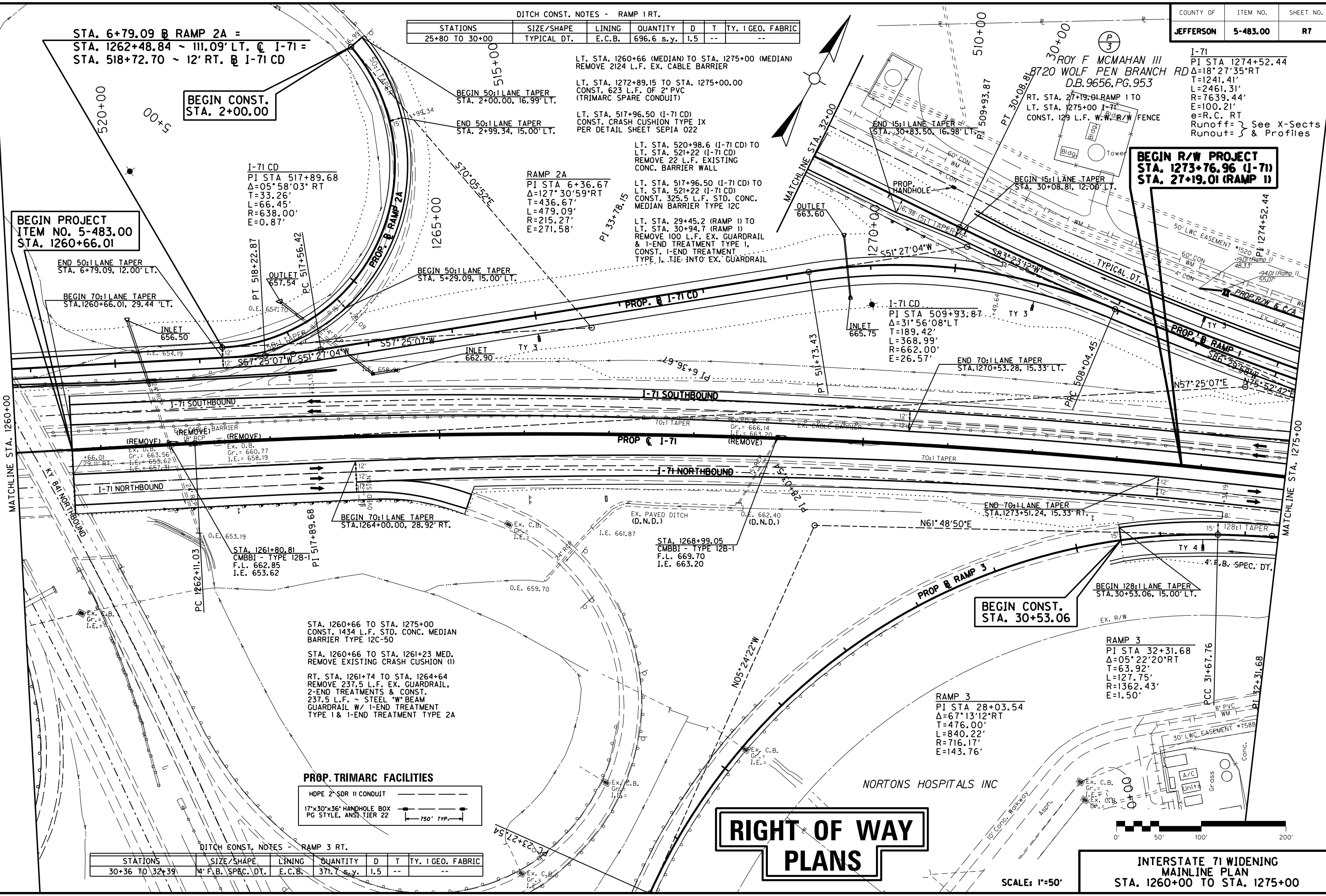
RAMP 2A  
 PI STA 6+36.67  
 $\Delta=127^{\circ}30'59''$  RT  
 $T=436.67'$   
 $L=479.09'$   
 $R=215.27'$   
 $E=271.58'$

I-71 CD  
 PI STA 517+89.68  
 $\Delta=05^{\circ}58'03''$  RT  
 $T=33.26'$   
 $L=66.45'$   
 $R=638.00'$   
 $E=0.87'$

BEGIN PROJECT  
 ITEM NO. 5-483.00  
 STA. 1260+66.01

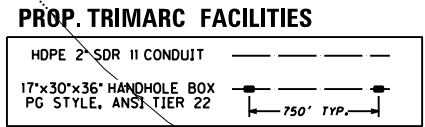
BEGIN R/W PROJECT  
 STA. 1273+76.96 (I-71)  
 STA. 27+19.01 (RAMP 1)

FILE NAME: U:\4109 - I-71 WIDENING JEFFERSON-OLDHAM PHASE 2\03 PLAN\1260+00-1275+00.DGN  
 USER: Snodgrass  
 DATE PLOTTED: September 4, 2018  
 E-SHEET NAME:  
 MicroStation v8.11.9.459

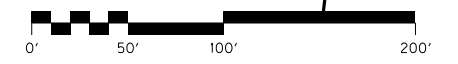


DITCH CONST. NOTES - RAMP 3 RT.

STATIONS	SIZE/SHAPE	LINING	QUANTITY	D	T	TY. I GEO. FABRIC
30+36 TO 32+39	4" F.B. SPEC. DT.	E.C.B.	37.7 s.y.	1.5	--	--



# RIGHT OF WAY PLANS



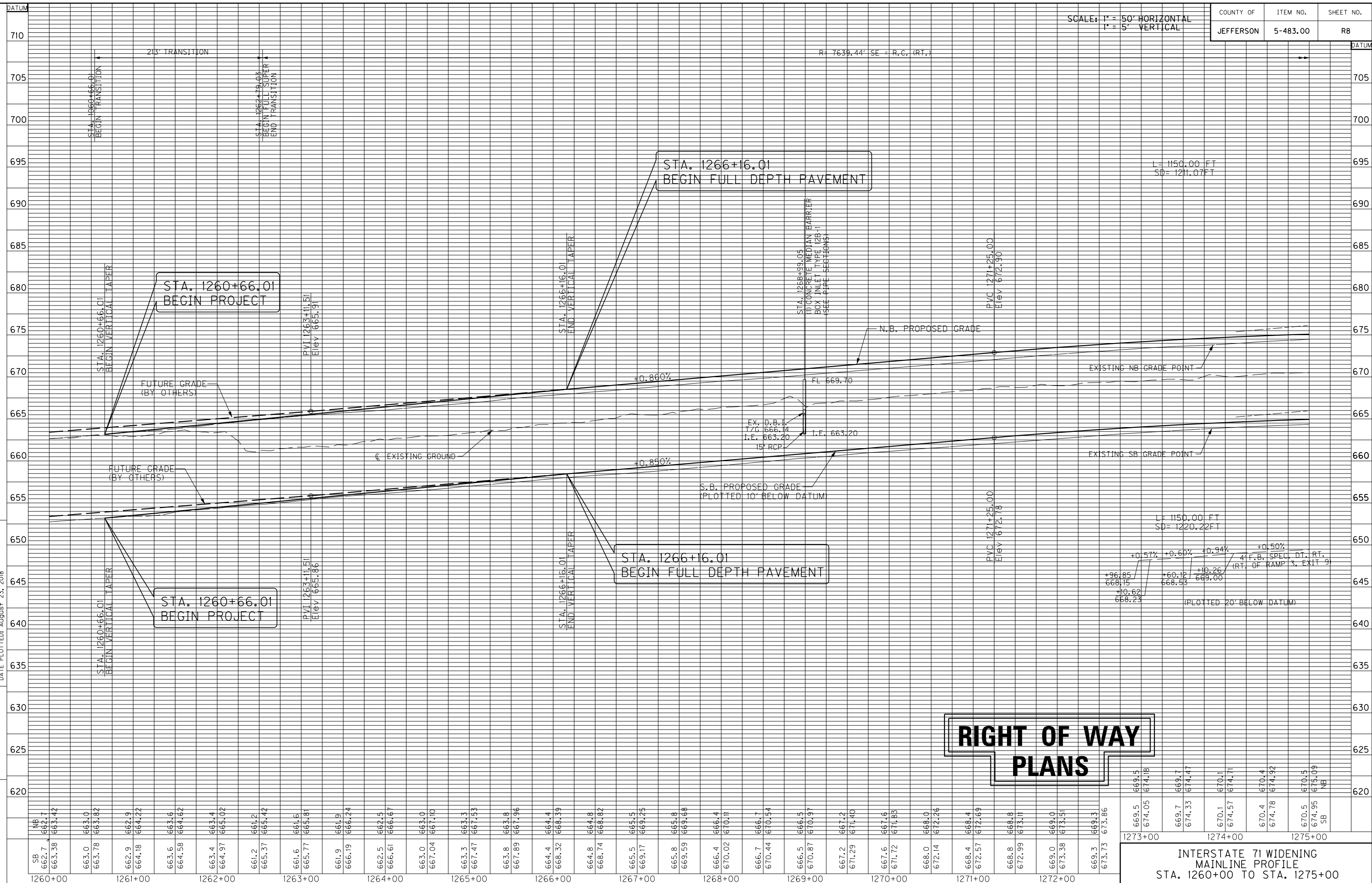
SCALE: 1"=50'

INTERSTATE 71 WIDENING  
 MAINLINE PLAN  
 STA. 1260+00 TO STA. 1275+00

MicroStation v8.11.9.459 E-SHEET NAME: \_\_\_\_\_ DATE PLOTTED: August 23, 2018 USER: Snodgrass FILE NAME: U:\4109 - I-71 WIDENING JEFFERSON\_OLDHAM PHASE 2\04 PROFILE\1260+00\_1275+00.PRF.DGN

SCALE: 1" = 50' HORIZONTAL  
1" = 5' VERTICAL

COUNTY OF	ITEM NO.	SHEET NO.
JEFFERSON	5-483.00	R8



**RIGHT OF WAY  
PLANS**

1273+00	669.5	669.5	674.18
	674.05		
1274+00	669.7	669.7	674.17
	674.33		
1275+00	670.1	670.1	674.71
	674.57		
	670.4	670.4	674.92
	674.78		
	670.5	670.5	675.09
	674.95		
	675.09	675.09	
	SB	SB	

INTERSTATE 71 WIDENING  
MAINLINE PROFILE  
STA. 1260+00 TO STA. 1275+00

FILE NAME: U:\4109 - I-71 WIDENING JEFFERSON.OLDHAM.PHASE3\03 PLAN\1275+00.1290+00.DGN  
 USER: ciccocelli  
 DATE PLOTTED: August 29, 2018  
 E-SHEET NAME:  
 MicroStation v8.11.9.608

COUNTY OF	ITEM NO.	SHEET NO.
JEFFERSON	5-483.00	R9

DITCH CONST. NOTES - RAMP 1 RT.

STATIONS	SIZE/SHAPE	LINING	QUANTITY	D	T	TY. I GEO. FABRIC
20+00 TO 23+00	4' F.B. SPEC. DT.	E.C.B.	497.6 s.y.	1.5'	--	--
23+00 TO 25+80	TYPICAL DT.	E.C.B.	464.4 s.y.	1.5'	--	--

DITCH CONST. NOTES - ML I-71 LT.

STATIONS	SIZE/SHAPE	LINING	QUANTITY	D	T	TY. I GEO. FABRIC
1280+65 TO 1285+00	4' F.B. SPEC. DT.	E.C.B.	721.5 s.y.	1.5'	--	--
1285+00 TO 1286+50	TYPICAL DT.	E.C.B.	248.8 s.y.	1.5'	--	--
1286+50 TO 1288+50	4' F.B. SPEC. DT.	TRM-1	250.8 s.y.	1.0'	--	--

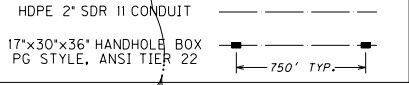
STA. 1288+50 TO STA. 1289+50 LT.  
 REMOVE EXIST. PAVED DITCH  
 REPLACE w/100' CLASS IV CHAN. LINING  
 (81.6 c.y., D = 1.0', T = 2.0',  
 185.7 s.y. OF TY. 1 GEOTEXTILE FABRIC

LT. STA. 1286+50 TO STA. 1290+00  
 REMOVE & REPLACE 350 L.F.  
 OF W.W. R/W FENCE

LT. STA. 1278+43.5 (MEDIAN) TO STA. 1279+32.5 (MEDIAN)  
 REMOVE 89.5 L.F. EX. GUARDRAIL

STA. 1275+00.00 TO STA. 1290+00.00  
 CONST. 1525 L.F. OF 2" PVC  
 (TRIMARC SPARE CONDUIT)

PROP. TRIMARC FACILITIES



LT. STA. 1287+71 TO 1290+00  
 REMOVE 197 L.F. EX. GUARDRAIL &  
 CONST. 229 L.F. ~ STEEL "W" BEAM  
 GUARDRAIL w/1-END TREATMENT TYPE 2A

LT. STA. 1275+00 TO STA. 1286+50  
 CONST. 1177 L.F. OF W.W. R/W FENCE

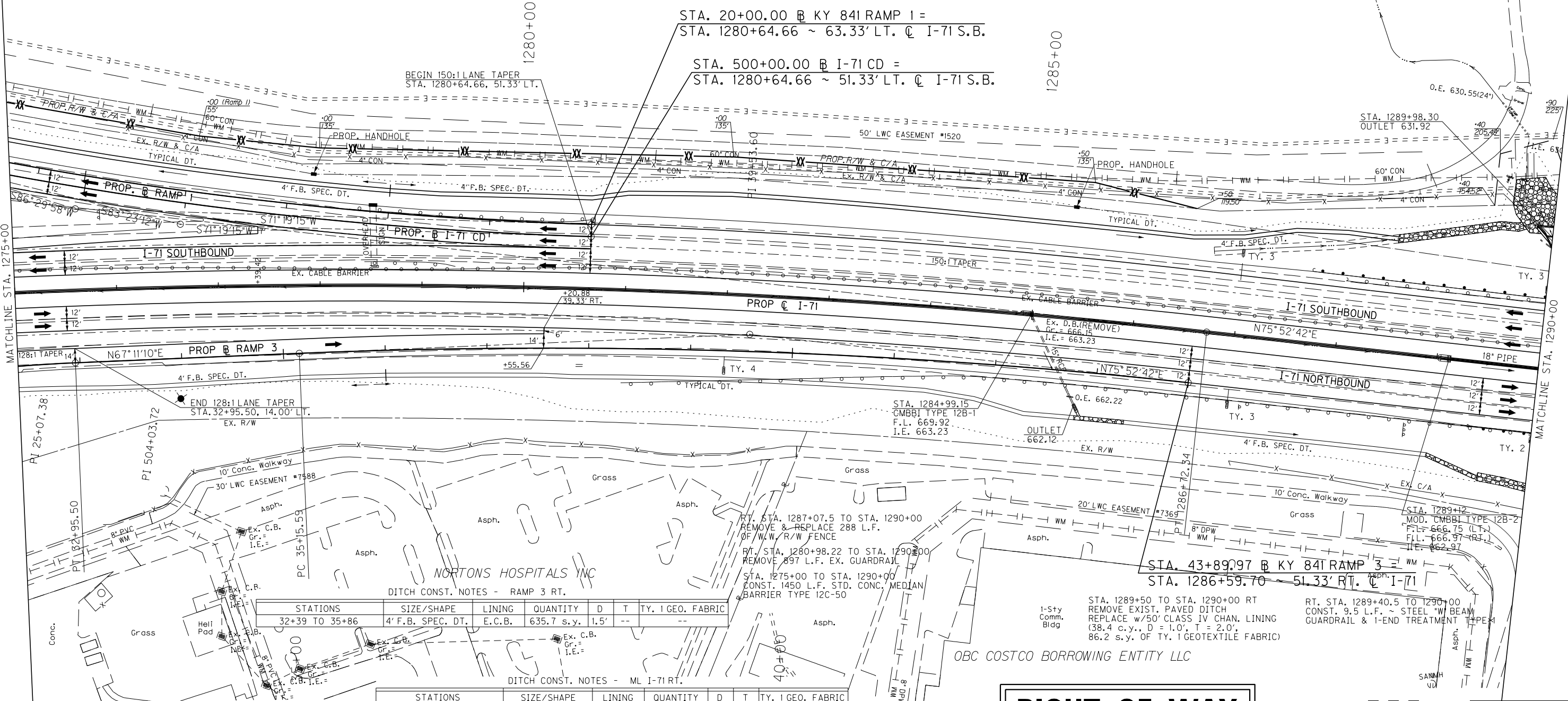
LT. STA. 1276+00 TO STA. 1286+50  
 REMOVE 1454 L.F. EX. R/W FENCE

LT. STA. 1275+00 (MEDIAN) TO STA. 1290+00 (MEDIAN)  
 REMOVE 1413.5 L.F. EXIST. CABLE BARRIER

RAMP 1  
 PI STA 25+07.38  
 $\Delta=15^{\circ}10'43"$  RT  
 T=507.38'  
 L=1008.81'  
 R=3808.00'  
 E=33.65'

I-71 CD  
 PI STA 504+03.72  
 $\Delta=12^{\circ}03'57"$  RT  
 T=403.72'  
 L=804.45'  
 R=3820.00'  
 E=21.27'

ROY F MCMAHAN III  
 8720 WOLF PEN BRANCH RD  
 D.B. 9656, PG. 953



DITCH CONST. NOTES - RAMP 3 RT.

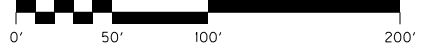
STATIONS	SIZE/SHAPE	LINING	QUANTITY	D	T	TY. I GEO. FABRIC
32+39 TO 35+86	4' F.B. SPEC. DT.	E.C.B.	635.7 s.y.	1.5'	--	--

DITCH CONST. NOTES - ML I-71 RT.

STATIONS	SIZE/SHAPE	LINING	QUANTITY	D	T	TY. I GEO. FABRIC
1278+50 TO 1281+50	4' F.B. SPEC. DT.	E.C.B.	549.3 s.y.	1.5'	--	--
1281+50 TO 1284+00	TYPICAL DT.	E.C.B.	376.1 s.y.	1.5'	--	--
1284+00 TO 1285+50	4' F.B. SPEC. DT.	TRM-1	172.7 s.y.	1.0'	--	--
1285+50 TO 1286+00	4' F.B. SPEC. DT.	CLASS IV	76.7 c.y.	2.0'	2.0'	124.3 s.y.
1286+00 TO 1289+00	4' F.B. SPEC. DT.	E.C.B.	557.3 s.y.	2.0'	--	--
1289+00 TO 1289+50	4' F.B. SPEC. DT.	CLASS IV	38.4 c.y.	1.0'	2.0'	86.2 s.y.

RAMP 3  
 PI STA 39+53.60  
 $\Delta=08^{\circ}35'51"$  RT  
 T=438.02'  
 L=874.39'  
 R=5827.07'  
 E=16.44'

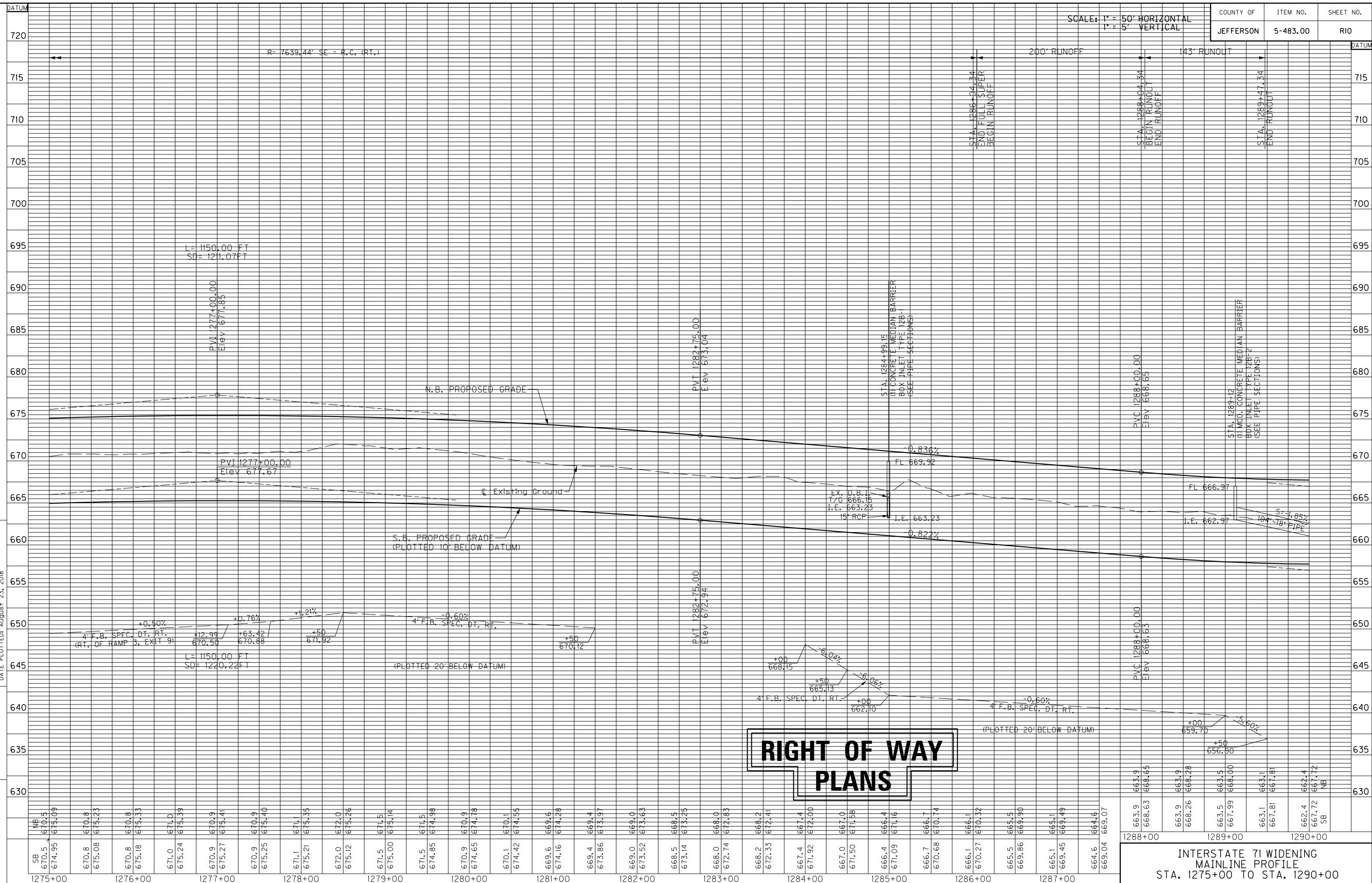
**RIGHT OF WAY  
 PLANS**



INTERSTATE 71 WIDENING  
 MAINLINE PLAN  
 STA. 1275+00 TO STA. 1290+00

SCALE: 1"=50'

MicroStation v8.11.9.459 E-SHEET NAME: \_\_\_\_\_ DATE PLOTTED: August 23, 2018 USER: Snodgrass FILE NAME: U:\4109 - 1-71 WIDENING JEFFERSON\_OLDHAMPHASE2\04 PROFILE\1275+00\_1290+00.PRF.DGN



SCALE: 1" = 50' HORIZONTAL  
1" = 5' VERTICAL

COUNTY OF	ITEM NO.	SHEET NO.
JEFFERSON	5-483.00	R10

STATION	SB	NB	ELEVATION
1275+00	670.5	670.5	670.5
1275+05	674.95	675.09	675.0
1275+10	670.8	670.8	675.23
1275+15	670.8	670.8	675.18
1275+20	671.0	671.0	675.24
1275+25	670.9	670.9	675.27
1275+30	670.9	670.9	675.41
1275+35	670.9	670.9	675.25
1275+40	671.1	671.1	675.13
1275+45	672.0	672.0	675.26
1275+50	671.5	671.5	675.14
1275+55	671.5	671.5	674.98
1275+60	670.9	670.9	674.78
1275+65	670.1	670.1	674.55
1275+70	669.6	669.6	674.28
1275+75	669.4	669.4	673.97
1275+80	669.0	669.0	673.63
1275+85	668.5	668.5	673.25
1275+90	668.0	668.0	672.83
1275+95	668.2	668.2	672.41
1276+00	667.4	667.4	672.00
1276+05	667.0	667.0	671.58
1276+10	666.4	666.4	671.16
1276+15	666.7	666.7	670.74
1276+20	666.1	666.1	670.32
1276+25	665.5	665.5	669.90
1276+30	665.1	665.1	669.49
1276+35	664.6	664.6	669.07
1288+00	663.9	663.9	668.63
1288+05	663.9	663.9	668.28
1288+10	663.5	663.5	668.00
1288+15	663.1	663.1	667.81
1288+20	662.4	662.4	667.72
1288+25	667.72	667.72	667.81
1288+30	662.4	662.4	667.81
1288+35	667.72	667.72	667.81
1288+40	662.4	662.4	667.81
1288+45	667.72	667.72	667.81
1288+50	662.4	662.4	667.81
1288+55	667.72	667.72	667.81
1288+60	662.4	662.4	667.81
1288+65	667.72	667.72	667.81
1288+70	662.4	662.4	667.81
1288+75	667.72	667.72	667.81
1288+80	662.4	662.4	667.81
1288+85	667.72	667.72	667.81
1288+90	662.4	662.4	667.81
1288+95	667.72	667.72	667.81
1289+00	662.4	662.4	667.81
1289+05	667.72	667.72	667.81
1289+10	662.4	662.4	667.81
1289+15	667.72	667.72	667.81
1289+20	662.4	662.4	667.81
1289+25	667.72	667.72	667.81
1289+30	662.4	662.4	667.81
1289+35	667.72	667.72	667.81
1289+40	662.4	662.4	667.81
1289+45	667.72	667.72	667.81
1289+50	662.4	662.4	667.81
1289+55	667.72	667.72	667.81
1289+60	662.4	662.4	667.81
1289+65	667.72	667.72	667.81
1289+70	662.4	662.4	667.81
1289+75	667.72	667.72	667.81
1289+80	662.4	662.4	667.81
1289+85	667.72	667.72	667.81
1289+90	662.4	662.4	667.81
1289+95	667.72	667.72	667.81
1290+00	662.4	662.4	667.81

**RIGHT OF WAY  
PLANS**

INTERSTATE 71 WIDENING  
MAINLINE PROFILE  
STA. 1275+00 TO STA. 1290+00

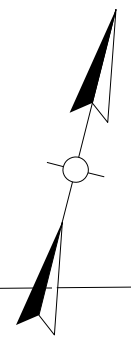


FILE NAME: U:\4109 - I-71 WIDENING JEFFERSON-OLDHAM PHASE 03 PLAN\1290+00-1305+00.DGN  
 USER: cpoaggett  
 DATE PLOTTED: August 29, 2018  
 E-SHEET NAME:  
 MicroStation v8.11.9.459

COUNTY OF	ITEM NO.	SHEET NO.
JEFFERSON	5-483.00	RII

DITCH CONST. NOTES - ML I-71 LT.

STATIONS	SIZE/SHAPE	LINING	QUANTITY	D	T	TY. I GEO. FABRIC
1293+50 TO 1296+01	4' F.B. SPEC. DT.	E.C.B.	288.9 s.y.	1.0'	--	--
1296+01 TO 1296+31	4' F.B. OUTLET DT.	CLASS IV	23.0 c.y.	1.0'	2.0'	54.2 s.y.
1296+31 TO 1296+50	4' F.B. SPEC. DT.	E.C.B.	21.9 s.y.	1.0'	--	--
1298+00 TO 1298+20	4' F.B. SPEC. DT.	E.C.B.	45.5 s.y.	2.0'	--	--
1298+20 TO 1298+50	4' F.B. OUTLET DT.	CLASS IV	54.4 c.y.	2.0'	2.0'	92.5 s.y.
1298+50 TO 1301+20	4' F.B. SPEC. DT.	TRM-1	491.1 s.y.	1.5'	--	--
1301+20 TO 1301+50	4' F.B. OUTLET DT.	CLASS IV	40.8 c.y.	1.5'	2.0'	77.0 s.y.
1301+50 TO 1304+20	4' F.B. SPEC. DT.	TRM-1	491.1 s.y.	1.5'	--	--
1304+20 TO 1304+50	4' F.B. OUTLET DT.	CLASS IV	40.8 c.y.	1.5'	2.0'	77.0 s.y.
1304+50 TO 1305+00	4' F.B. SPEC. DT.	TRM-1	68.0 s.y.	1.0'	--	--



LT. STA. 1297+83 TO STA. 1298+08  
 CONST. 34 S.Y. BASE FAILURE REPAIR

LT. STA. 1297+96 TO STA. 1298+21  
 CONST. 25 L.F. ~ ISLAND HEADER CURB

LT. STA. 1297+94.9 TO STA. 1305+00  
 REMOVE & REPLACE 740 L.F.  
 OF W.W. R/W FENCE

LT. STA. 1297+87.68 TO STA. 1300+05.63  
 REMOVE 218 L.F. EX. GUARDRAIL &  
 I-GUARDRAIL CONNECTOR TO BRIDGE END

LT. STA. 1297+90.33 (MEDIAN) TO STA. 1300+53.44 (MEDIAN)  
 REMOVE 422.5 L.F. EX. GUARDRAIL &  
 I-GUARDRAIL CONNECTOR TO BRIDGE END Z

LT. STA. 1300+42.15 (MEDIAN) TO STA. 1305+00 (MEDIAN)  
 REMOVE 458 L.F. EX. CABLE BARRIER

LT. STA. 1297+96 TO STA. 1299+96  
 CONST. 150 L.F. ~ STEEL "W" BEAM  
 GUARDRAIL, I-CONNECTOR TO  
 BRIDGE END TYPE A & I-END  
 TREATMENT TYPE I

LT. STA. 1304+64.3 TO STA. 1305+00.0  
 CONST. 35.9 L.F. ~ NOISE WALL

STA. 1297+37.04 @ I-71=

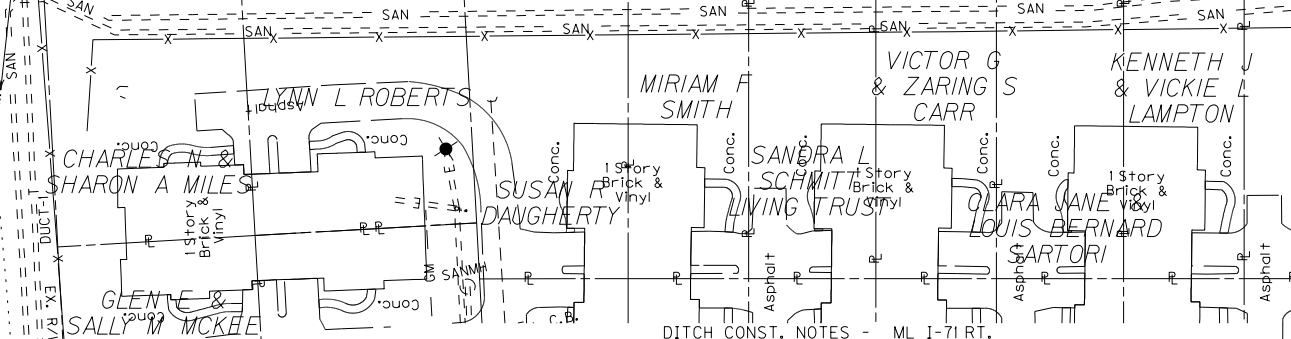
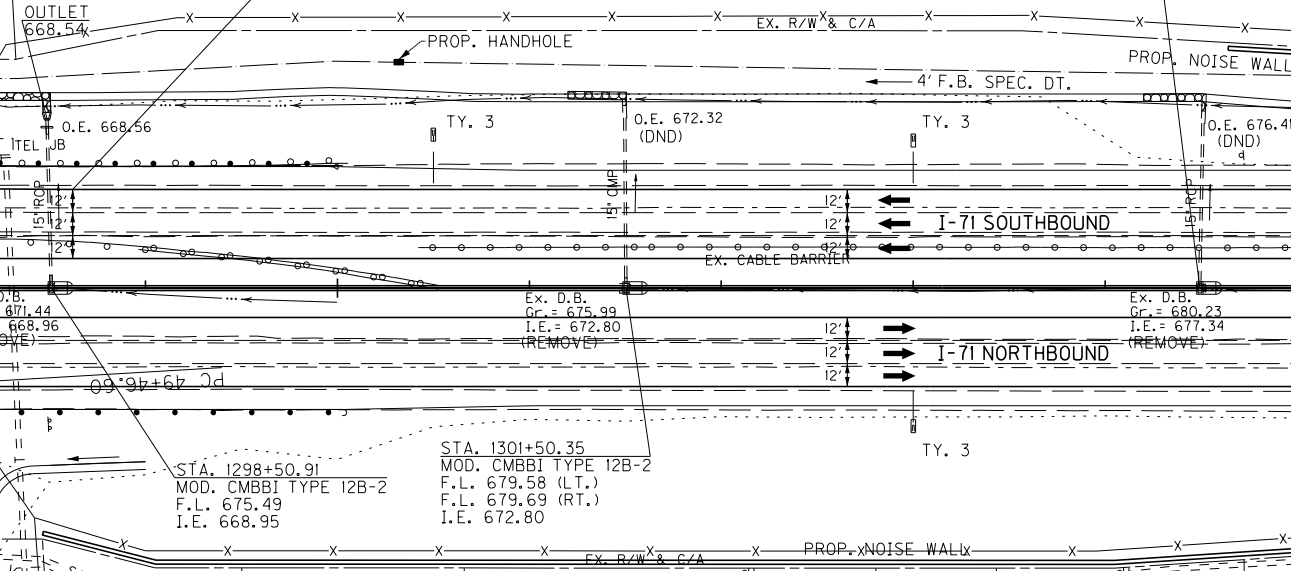
STA. 50+00.00 @ CHAMBERLAIN LN.

STA. 1299+62.02, 51.33' LT.

STA. 1298+62.02, 51.33' LT.

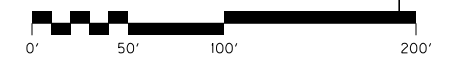
STA. 1299+62.02, 51.33' LT.

STA. 1304+49.33  
 MOD. CMBBI TYPE 12B-2  
 F.L. 683.79 LT.  
 F.L. 683.84 RT.  
 I.E. 677.34



DITCH CONST. NOTES - ML I-71 RT.

STATIONS	SIZE/SHAPE	LINING	QUANTITY	D	T	TY. I GEO. FABRIC
1290+18	2' F.B. OUTLET DT.	CLASS IV	9.2 c.y.	1.5'	2.0'	24.1 s.y.
1294+50 TO 1296+15	4' F.B. SPEC. DT.	E.C.B.	224.8 s.y.	1.0'	--	--
1296+15 TO 1296+50	4' F.B. OUTLET DT.	CLASS IV	31.8 c.y.	1.0'	2.0'	70.5 s.y.
1298+50 TO 1299+00	4' F.B. SPEC. DT.	TRM-1	78.9 s.y.	1.0'	--	--



SCALE: 1"=50'

INTERSTATE 71 WIDENING  
 MAINLINE PLAN  
 STA. 1290+00 TO STA. 1305+00

LT. STA. 1296+53.75 TO STA. 1296+71  
 CONST. 17.25 L.F. ~ ISLAND HEADER CURB

LT. STA. 1290+00 TO STA. 1296+71.8  
 REMOVE & REPLACE 745 L.F.  
 W.W. R/W FENCE

LT. STA. 1290+00 TO STA. 1296+43.2  
 REMOVE 643 L.F. EX. GUARDRAIL &  
 I-GUARDRAIL CONNECTOR TO BRIDGE END

LT. STA. 1290+00 (MEDIAN) TO STA. 1296+35.27 (MEDIAN)  
 REMOVE 635 L.F. EX. CABLE BARRIER

LT. STA. 1290+00 TO STA. 1296+71  
 CONST. 671 L.F. ~ STEEL "W" BEAM  
 GUARDRAIL & I-CONNECTOR TO  
 BRIDGE END TYPE A-I

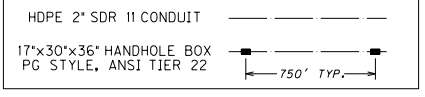
LT. STA. 1290+00.00 TO STA. 1305+00.00  
 CONST. 1502 L.F. OF 2" PVC  
 (TRIMARC SPARE CONDUIT)

ROY F MCMAHAN III  
 8720 WOLF PEN BRANCH RD  
 D.B. 9656, PG. 953

ROY F MCMAHAN III  
 MCMAHAN HOLDINGS LLC

CHAMBERLAIN LLC

**PROP. TRIMARC FACILITIES**



STA. 1290+00 TO STA. 1291+50 RT  
 REMOVE EXIST. PAVED DITCH  
 REPLACE w/150' CLASS IV CHAN. LINING  
 (114.7 c.y., D = 1.0', T = 2.0',  
 245.1 s.y. OF TY. I GEOTEXTILE FABRIC)

RT. STA. 1290+00 TO STA. 1296+74.02  
 REMOVE 674 L.F. EX. GUARDRAIL &  
 I-GUARDRAIL CONNECTOR TO BRIDGE END

RT. STA. 1294+20.09 (MEDIAN) TO STA. 1296+71.34 (MEDIAN)  
 REMOVE 411 L.F. EX. GUARDRAIL &  
 I-GUARDRAIL CONNECTOR TO BRIDGE END

STA. 1290+00 TO STA. 1296+74.8  
 CONST. 625 L.F. STD. CONC. MEDIAN  
 BARRIER TYPE 12C-50

RT. STA. 1290+00 TO STA. 1296+92.4  
 REMOVE & REPLACE 736 L.F.  
 OF W.W. R/W FENCE

RT. STA. 1290+00 TO STA. 1296+78.2  
 CONST. 678 L.F. ~ STEEL "W" BEAM  
 GUARDRAIL & I-CONNECTOR TO  
 BRIDGE END TYPE A

RT. STA. 1296+60.95 TO STA. 1296+78.2  
 CONST. 17.25 L.F. ~ ISLAND HEADER CURB

RT. STA. 1298+47.0 TO STA. 1305+00.0  
 CONST. 655.26 L.F. ~ NOISE WALL

RT. STA. 1298+03.2 TO STA. 1298+28.2  
 CONST. 25 L.F. ~ ISLAND HEADER CURB

STA. 1297+99.8 TO STA. 1305+00  
 CONST. 625.5 STD. CONC. MEDIAN  
 BARRIER TYPE 12C-50

RT. STA. 1298+05.1 TO STA. 1305+00  
 REMOVE & REPLACE 727 L.F.  
 OF W.W. R/W FENCE

RT. STA. 1298+03.2 TO STA. 1300+03.2  
 CONST. 200 L.F. ~ STEEL "W" BEAM  
 GUARDRAIL, I-CONNECTOR TO BRIDGE  
 TYPE A-I & I-END TREATMENT TYPE 2A

KND REAL ESTATE 33 LLC

**RIGHT OF WAY  
 PLANS**

MATCHLINE STA. 1290+00

MATCHLINE STA. 1305+00

55+00

1295+00

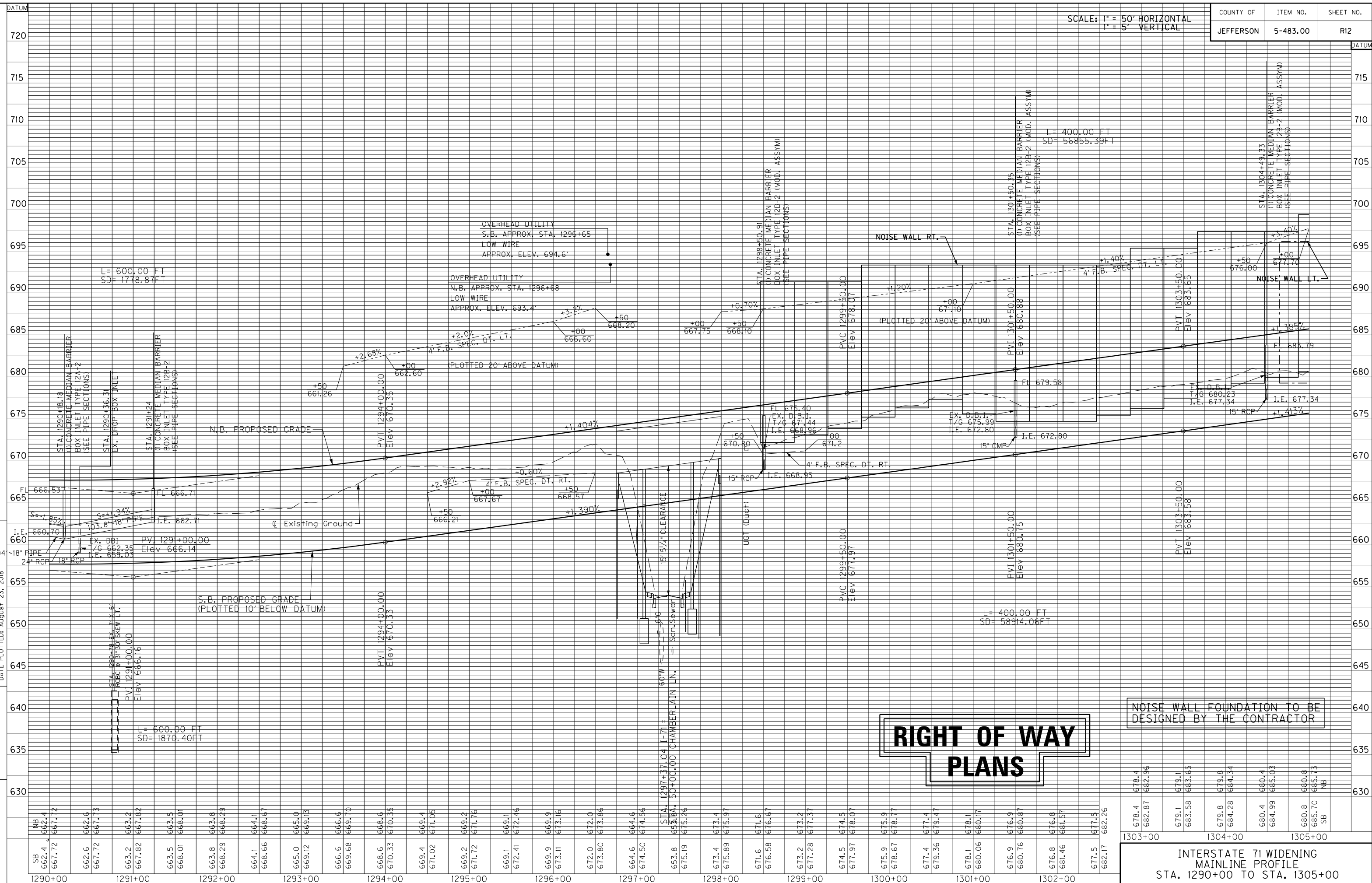
1300+00

45+00

MicroStation v8.11.9.459 E-SHEET NAME: \_\_\_\_\_ DATE PLOTTED: August 23, 2008 USER: Snodgrass FILE NAME: U:\4109 - I-71 WIDENING JEFFERSON-OLDHAM PHASE 2\04 PROF\LEV 1290+00\_1305+00.PRP.DGN

SCALE: 1" = 50' HORIZONTAL  
1" = 5' VERTICAL

COUNTY OF	ITEM NO.	SHEET NO.
JEFFERSON	5-483.00	R12



**RIGHT OF WAY  
PLANS**

NOISE WALL FOUNDATION TO BE  
DESIGNED BY THE CONTRACTOR

1303+00	678.4	678.4	679.1	679.8	680.4	680.8
	682.87	682.96	683.58	684.28	684.99	685.13
			683.65	684.34	685.03	685.70
						SB

INTERSTATE 71 WIDENING  
MAINLINE PROFILE  
STA. 1290+00 TO STA. 1305+00